



PAVER SET POLYMERIC SAND

◆ The Pro's Choice Since 1936



Sakrete® Paver Set Polymeric Sand is a mixture of sand and special additives designed to fill the joints between pavers, bricks or natural stone.

Features:

- Reduces weed growth
- Resists joint wash out
- Resists insect penetration
- Open to foot traffic in 24 hours
- Open to light vehicular traffic in 72 hours

Use For:

- Filling paver joints in patios, driveways or walkways

Size/Coverage*:

Size	Coverage: 1/4" joint - 2" thick paver
40 lb pail	30 to 45 ft ² (2.8 to 4.2 m ²)
50 lb bag	40 to 55 ft ² (3.7 to 5.1 m ²)

*Coverage varies considerably depending on size, shape and depth of paver. For more accurate coverage information based on actual paver dimensions use our website calculator: sakrete.com.

Technical Data:

DIVISION 32
Stone Paving - 32 14 40

Color:

Brown and Gray

Recommended Dimensions:

- Joint width: Minimum joint width is 1/4" (6.4 mm).
- Maximum joint width: 1.5" (38 mm)
- Paver Set can be used in pavers with false joints that are 3/8" (9.5 mm) deep. However special care must be taken while cleaning off excess dust for the pavers, especially if a leaf blower is used. In addition the wetting procedure differs slightly than when filling full depth joints.

Installation:

1. Pavers must be installed on an adequate drainage base such as sand, stone dust or preformed paver base material.
2. For existing pavers, clean the joints between the pavers to the full depth of the paver.
3. Paver Set should be applied when temperatures are above 40°F (4°F) and no rain is forecast within 24 hours.
4. Pavers must be completely dry. If pavers are damp or wet the polymer will leave a stain on the surface.
5. Pour Paver Set onto the pavers. Using a broom sweep Paver Set into the joints. Material should be applied to within 1/8" (3.2 mm) of the top of the paver. If the pavers have a beveled top do not fill the beveled section.
6. Paver Set must be placed in the full depth of the joint. Do not use sand or other material to partially fill the joint.
7. To ensure that the dry Paver Set fills the entire joint it is necessary to compact the material before wetting. If possible run a vibratory compactor over the pavers. If this is not practical use a broom handle to tap on the pavers. The Paver Set level with drop. Refill the joints and repeat the tamping process.
8. Using a leaf blower set on low speed hold the blower about waist high and blow the excess dust from the top of the pavers. FAILURE TO ELIMINATE ALL DUST MAY RESULT IN STAINING. THIS IS ESPECIALLY CRITICAL WITH RED AND TEXTURED PAVERS. If a leaf blower is not available, use a fine bristle brush to remove all Paver Set from pavers. If the pavers have a false joint extra care must be taken when cleaning and wetting to keep from dislodging the Paver Set. It may be necessary to adjust the water to the "mist" setting to avoid displacing the Paver Set. It may not be possible to use a leaf blower on pavers with a false joint.
9. THE PROCESS OF WATERING THE PAVES SET IS CRITICAL. INSUFFICIENT WATER WILL NOT ALLOW THE PAVES SET TO HARDEN THE FULL DEPTH OF THE PAVES. TOO MUCH WATER WILL LEAD TO STAINING. Adjust the spray nozzle to the "shower" setting. Spray using a back and forth motion. Look carefully at the joints to see if the water is soaking in. Stop spraying and watch the joint surface. If all water has soaked in keep spraying. Repeat until the joint will not accept any more water. Do not allow water to splash Paver Set onto the pavers. Do not add so much water that a white film (the polymer) will appear and float out of the joint and onto the pavers. The wetting process should be done without interruption. If too much time elapses the surface of the Paver Set will set and prevent water from reaching the bottom of the paver. If the surface of the joint is hard but the bottom doesn't receive sufficient water the Paver Set will eventually fail.

Curing:

1. Paver Set should be protected from rain for 24 hours. It may be necessary to cover Paver Set if a hard downpour occurs within 72 hours.
2. Paver Set may take up to 48 hours or longer to set depending on temperature and humidity or substrate conditions.
3. Sharp heavy objects may penetrate Paver Set even after it has taken a final set.

Paver Set should not be used in areas that are subject to standing water

NOTE: Proper application and installation of all Sakrete products are the responsibility of the end user.



PAVER SET POLYMERIC SAND

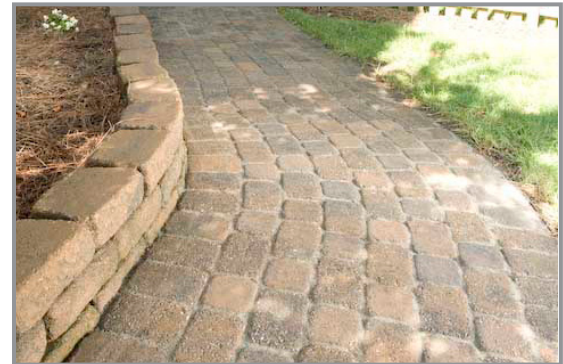
◆ The Pro's Choice Since 1936

Safety:

READ and UNDERSTAND the Safety Data Sheet (SDS) before using this product. WARNING: Wear protective clothing and equipment. For emergency information, call CHEMTREC at 800-424-9300 or 703-527-3887 (outside USA). KEEP OUT OF REACH OF CHILDREN.

Limited Product Warranty:

The manufacturer warrants that this product shall be of merchantable quality when used or applied in accordance with the manufacturer's instructions. This product is not warranted as suitable for any purpose other than the general purpose for which it is intended. This warranty runs for one (1) year from the dates the product is purchased. ANY IMPLIED WARRANTY OF MERCHANTABILITY OR FITNESS FOR A PARTICULAR PURPOSE ON THIS PRODUCT IS LIMITED TO THE DURATION OF THIS WARRANTY. Liability under this warranty is limited to replacement or defective products or, at the manufacturer's option, refund of the purchase price. CONSEQUENTIAL AND INCIDENTAL DAMAGES ARE NOT RECOVERABLE UNDER THIS WARRANTY.



PROPOSITION 65 WARNING: This product contains crystalline Silica, Quartz and may also contain traces amounts of other chemicals known to the State of California to cause cancer, birth defects or other reproductive harm. For more information, go to www.P65Warnings.ca.gov.

PROPOSICIÓN 65 ADVERTENCIA: Este producto contiene sílice cristalina, cuarzo y también puede contener pequeñas cantidades de otros productos químicos que el estado de California considera que causan cáncer, defectos de nacimiento u otros daños reproductivos. Para más información, vaya www.P65Warnings.ca.gov.